

# Solenoid Directional valve

SV10-4X

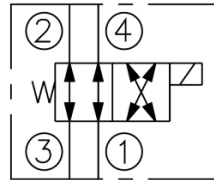
—276bar

SV10-4X Valve Series

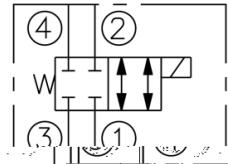
U.S. Cartridge — 276 bar



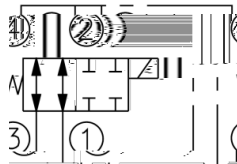
Symbol



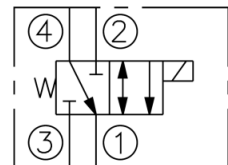
207 Bar (3000 psi)



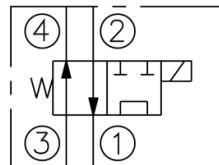
SV10-41  
207 Bar (3000psi)



SV10-42  
207 Bar (3000psi)



SV10-43  
207 Bar (3000psi)



SV10-44  
207 Bar (3000psi)

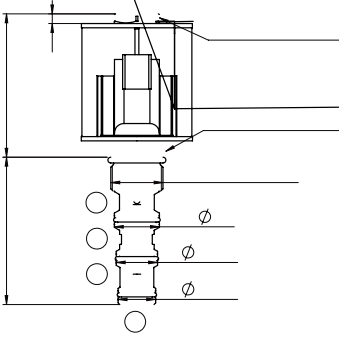


Description

A Cartridge-style Direct-acting Spool-type Solenoid Directional Valve



## Dimensions



## Technical Features

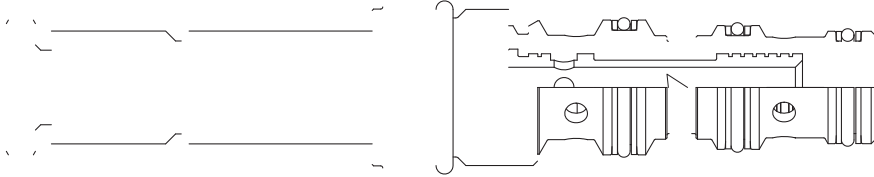
- Poppet is hardened and ground to guarantee minimal wear and to extend service life. All external surfaces are zinc plated and corrosion-proof. All valve parts are made of high strength steel. Compact size.
  - Continuous-duty rated coil.
  - Optional coil voltages and terminations.
  - All ports may be fully pressurized.
- 
- Industry-common cavity.



## Technical Data

|  |   |
|--|---|
| <b>Pressure rating</b>                   |   |
| <b>Maximum operating pressure</b>        |   |
| <b>Maximum flow</b>                      |   |
| <b>Maximum internal leakage</b>          |   |
| <b>Coil rated load</b>                   | Work continuously in the rated voltage range of |
| <b>Minimum operate voltage</b>           |   |
| <b>20<br/>Coil initial current at 20</b> |   |
| <b>External component treatment</b>      | Zn/Fe - standard<br>Zn/Ni                       |
| <b>Orientation</b>                       | No restrictions                                 |
| <b>Weight</b>                            |   |
| <b>Oil Temperature Range</b>             |   |
| <b>Fluids</b>                            | synthetics with lubricating properties          |
| <b>Viscosities</b>                       |   |
| <b>Oil testing condition</b>             | ISO VG 46 cSt                                   |
| <b>Filtration</b>                        |   |
| <b>Cavity</b>                            |   |



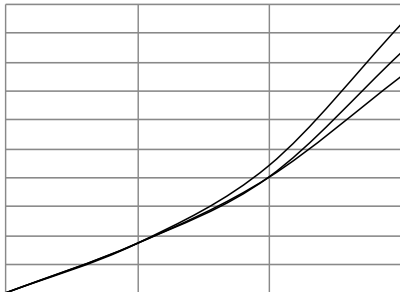
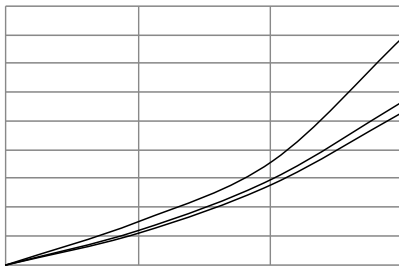
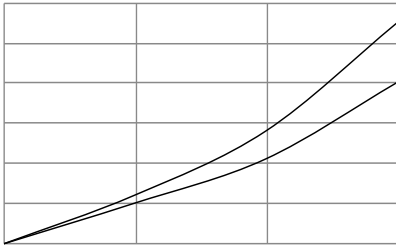
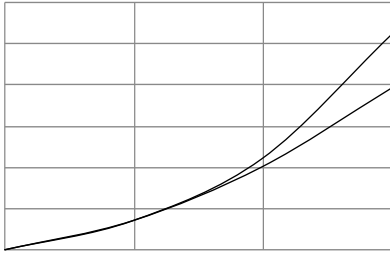


are closed.

are closed.



## Performance





## Cavity

□□□□□

