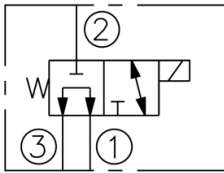
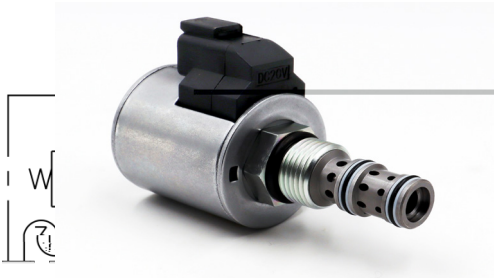


SV10-3X Valve Series

valve



A Cartridge-style Direct-acting Spool-type Solenoid Directional Valve



minimal wear
proof. All va

- Optional con
- All ports may be fully

Industry-common cavity.



Coil rated load	Work continuously in the rated voltage range of
	Zn/Fe - standard Zn/Ni
	No restrictions
Weight	
Fluids	synthetics with lubricating properties
Viscosities	
	ISO VG 46 cSt

